

Hooby Lane (Clipsham) Limestone



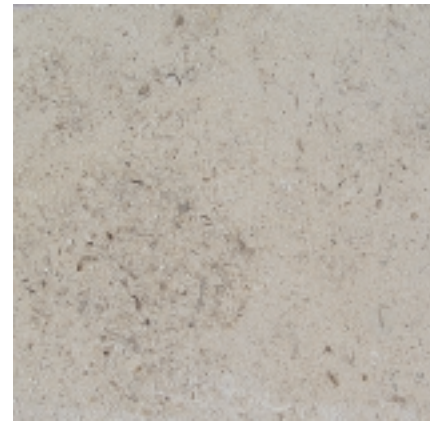
Goldholme Stone
making homes *beautiful*



Fine Grain



Medium Grain



Coarse Grain



Hard White



Flooring Grade

Test Results

Client specimen number	Clipsham	Clipsham	Clipsham	Clipsham	Clipsham	Clipsham
MLS specimen number	222496/05/11	222496/05/12	222496/05/13	222496/05/14	222496/05/15	222496/05/16
Porosity (% by volume)	12.07	12.95	13.27	13.45	11.85	13.33
Saturation coefficient	0.89	0.89	0.89	0.89	0.87	0.89
Water absorption (% by weight)	4.50	4.91	5.03	5.15	4.35	5.07
Apparent density (kgm ⁻³)	2369	2344	2337	2331	2377	2335

The calculation of apparent density assumes the density of water to be 998 kgm⁻³ at 20°C.

Test Summary

	Porosity (% by Volume)	Saturation Coefficient	Water Absorption (% by weight)	Apparent Density (Kgm-3)	Compressive Strength (MPa)
Clipsham Limestone	12.82	0.89	4.84	2349	51.9

These results are consistent with typical published data for a creamy brown Clipsham Limestone and should be durable in all but the most exposed locations, e.g. paving and steps.